



# 01

## RF/COAX CONNECTORS

## E-tec Interconnect AG Switzerland



## E-tec Interconnect Asia Ltd.

The **E-tec** Switzerland factory was founded in 1973 for the production of precision pins for the watch industry. As of the 1980's the company expanded it's business into manufacturing of precision pin connectors for the electronics industry (IC-Sockets, Board-to-Board Connectors, etc.)

In 1993 **E-tec** set-up it's own operations in Taiwan in order to enhance the product range with stamped pin products (PLCC, Pin headers, Female headers, D-Sub's, Switches, etc.). In 2001 **E-tec** transferred certain labor intensive productions to its new production plant in Mainland China.

With over 35 years experience in connector manufacturing, **E-tec** has set-up it's own sales network in Europe & Asia, as well as established distributors and representatives in most countries around the world.

**E-tec** offers flexibility for custom specific products and delivers standard and custom products starting from 0.30mm pitch upwards. We offer short delivery times from prototype to large volume productions. Thanks to our in-house product development department and production sites in Switzerland, Taiwan and Mainland China we aim to offer a solution to all your problems.

As a fully approved ISO 9001:2008 manufacturer, quality assurance is an essential part of our production process, since our main objective is to offer products which correspond to the highest quality standards.

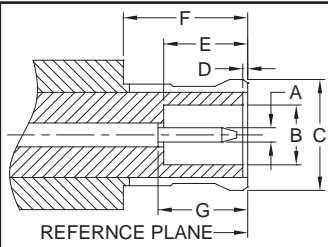
<b>Part-Number</b>	<b>Type</b>	<b>Page</b>
RFJ-16R-B1B792-N5	1.6/5.6 R/A THT JACK	11 & 12
RFJ-16R-C1B733-N5	1.6/5.6 R/A CRIMP JACK	11 & 12
RFJ-MCR-B1N592-58	MCX R/A THT JACK	1 & 2
RFJ-MCS-B1N592-58	MCX STRAIGHT THT JACK	1 & 2
RFJ-MCS-C1N502-58	MCX CRIMP JACK	1 & 2
RFJ-MMS-B1N592-58	MMCX STRAIGHT THT JACK	3 & 4
RFJ-MMS-B2L592-58	MMCX R/A EMBEDDED SMT JACK	3 & 4
RFJ-MMS-C1N502-58	MMCX CRIMP JACK	3 & 4
RFJ-SAR-B1N592-58	SMA R/A THT JACK	5 & 6
RFJ-SAS-B3L592-58	SMA SMT EDGE MOUNT JACK	5 & 6
RFJ-SAS-C1N502-58	SMA CRIMP JACK	5 & 6
RFJ-SAS-P1A591-58	SMA PANEL JACK	5 & 6
RFJ-SBS-B1N592-58	SMB STRAIGHT THT JACK	9 & 10
RFJ-SBS-C1N502-58	SMB CRIMP JACK	9 & 10
RFJ-SBS-P1B591-58	SMB PANEL JACK	9 & 10
RFJ-SRR-B1N592-58	SMA Reverse R/A THT JACK	7 & 8
RFJ-SRS-B1N592-58	SMA Reverse STRAIGHT THT JACK	7 & 8
RFJ-SRS-C1N502-58	SMA Reverse CRIMP JACK	7 & 8
RFP-16R-C2N733-N5	1.6/5.6 R/A CLAMP PLUG	11 & 12
RFP-16S-C1N733-N5	1.6/5.6 CRIMP PLUG	11 & 12
RFP-MCR-C1N502-58	MCX R/A CRIMP PLUG	1 & 2
RFP-MCS-C1N502-58	MCX CRIMP PLUG	1 & 2
RFP-MMR-C1N502-58	MMXC R/A CRIMP PLUG	3 & 4
RFP-MMS-B1N592-58	MMXC STRAIGHT THT PLUG	3 & 4
RFP-SAS-C1N502-58	SMA CRIMP PLUG	5 & 6
RFP-SBR-B1N592-58	SMB R/A THT PLUG	9 & 10
RFP-SBS-C1N502-58	SMB CRIMP PLUG	9 & 10
RFP-SRR-C1N502-58	SMA Reverse R/A CRIMP PLUG	7 & 8
RFP-SRS-C1N502-58	SMA Reverse CRIMP PLUG	7 & 8

# RF Connectors

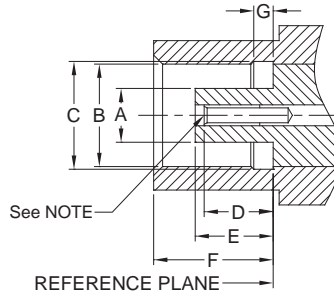
## MCX Series



These MCX miniature snap-on connectors with 50Ω impedance operate in a frequency range up to 6 GHz. The MCX series is an ideal solution for GPS, wireless communications and test measurement applications.



Dimension	PLUG	
	Millimeters	
	Minimum	Maximum
A	0.48	0.53
B	2.00	2.07
C	3.66	3.76
D	0.00	0.30
E	2.81	3.20
F	4.16	--
G	2.81	3.20



Dimension	JACK	
	Millimeters	
	Minimum	Maximum
A	1.80	1.97
B	3.43	3.48
C	3.61	3.75
D	2.31	2.79
E	2.61	2.79
F	4.00	4.12
G	0.75	0.85

PLUG

JACK

**NOTE**

In order to meet the VSWR and CR values as specified, the inner hole diameter needs to be mated with a 0.48/0.53mm dia. pin.

Electrical		
Impedance	50 Ω	
Frequency Range	0 - 6 GHz	
Working Voltage	335 V rms max.	
Dielectric Withstanding Voltage	1000 V rms min.	
VSWR	Straight	1.3 max.
	Right Angle	1.5 max.
Contact Resistance	Center Contact	5 mΩ max.
	Outer Contact	2.5 mΩ max.
Insulator Resistance	1000 MΩ min.	

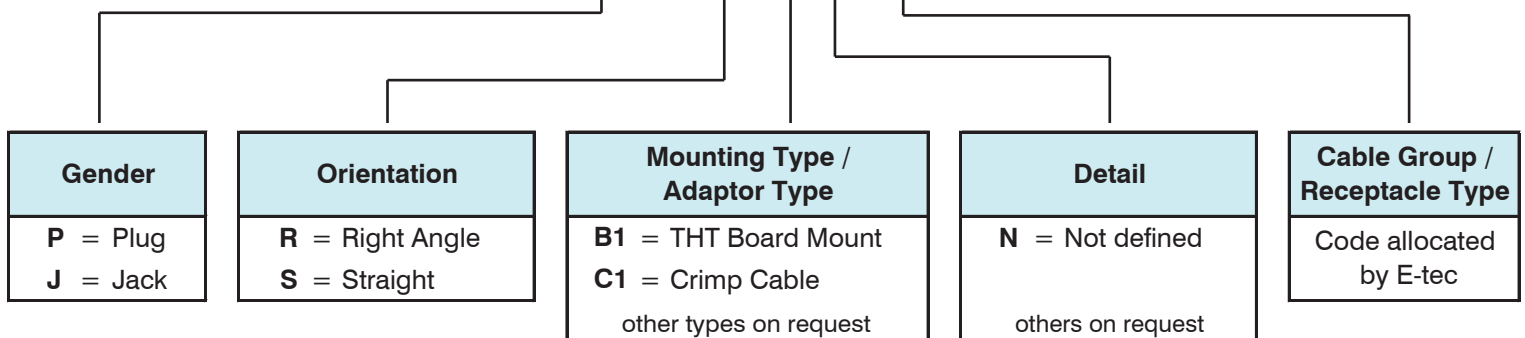
Material		
Parts Name	Material	Finish
Body, Metal Parts	Brass per QQ-B-626	Gold 0.07μm (3 μ")
Center Contacts	Male: Brass per QQ-B-626	Gold 0.75μm (30 μ")
	Female: Beryllium copper per QQ-C-530	Gold 0.75μm (30 μ")
Insulators	Teflon	None
Outer Contact of Plug	Beryllium copper per QQ-C-530	Gold 0.07μm (3 μ")
Crimp Ferrules	Annealed Brass	Gold 0.07μm (3 μ")

NOTE: Other materials and platings are available on request.

Mechanical & Environmental	
Engagement torque	15 N max.
Disengagement torque	20 N max.
Contact Retention	18 N min.
Durability(Mating)	500 cycles min. (for Beryllium copper female contact only)
Temperature Range	-65°C to +155°C
Vibration	3 cycles, 3 opposite directions, 10-150 Hz, 10-60 Hz:0.75mm/.03", 60-150 Hz 10G
Temperature Shock	MIL-STD-202 Method 107
Humidity	MIL-STD-202 Method 103, Condition. B.
Mechanical Shock	MIL-STD-202 Method 213, Condition. B.

How to order

RF X - MC X - XX X 5 xx - 58

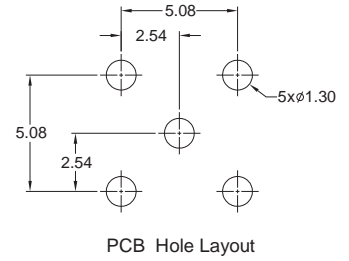
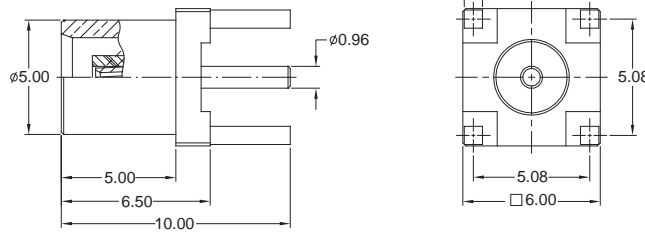


# RF Connectors

## MCX Series

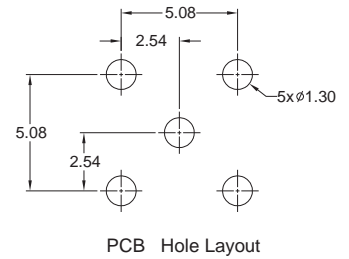
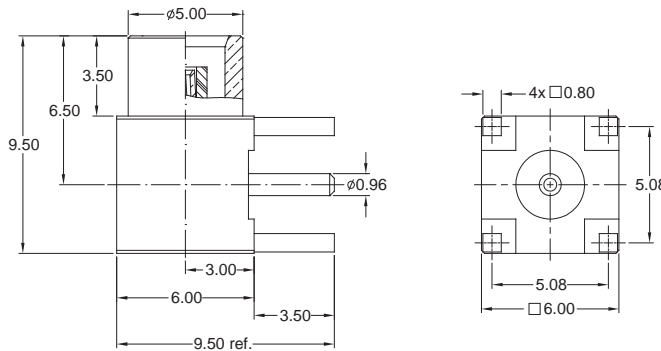
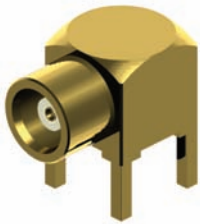


### STRAIGHT THT JACK



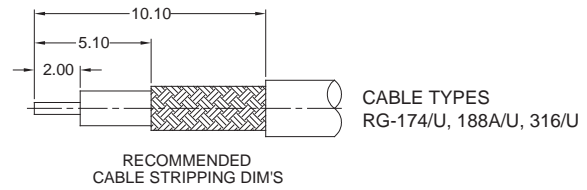
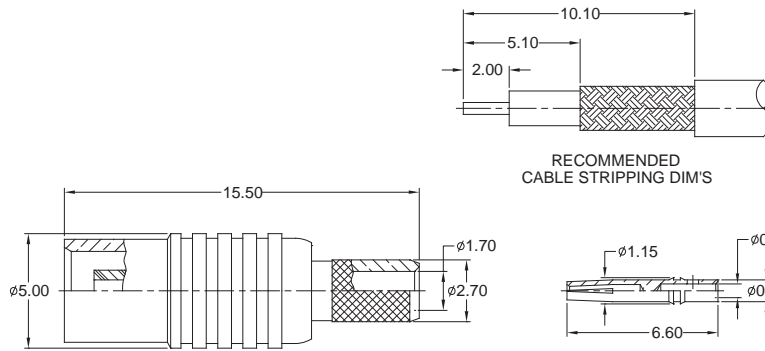
Order Code  
RFJ-MCS-B1N592-58

### R/A THT JACK



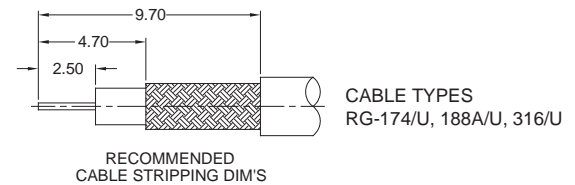
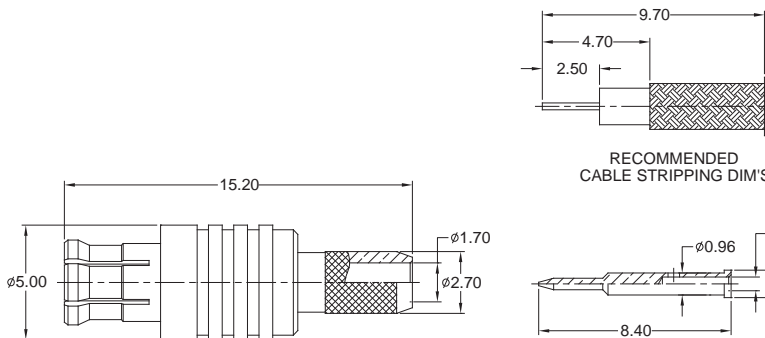
Order Code  
RFJ-MCR-B1N592-58

### CRIMP JACK



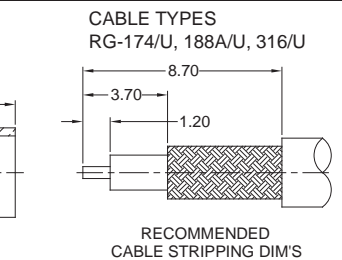
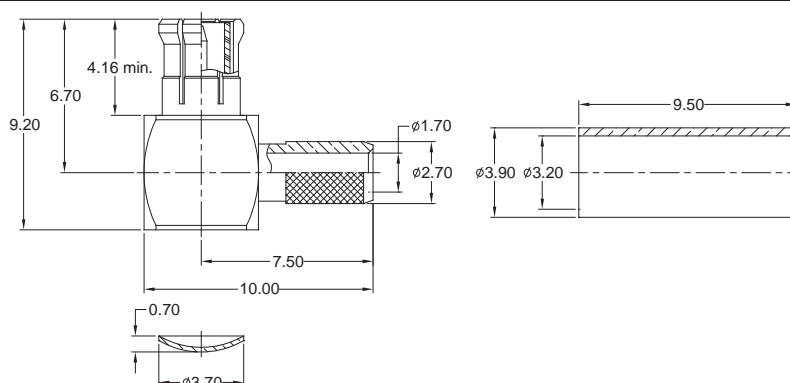
Order Code  
RFJ-MCS-C1N502-58

### CRIMP PLUG



Order Code  
RFP-MCS-C1N502-58

### R/A CRIMP PLUG



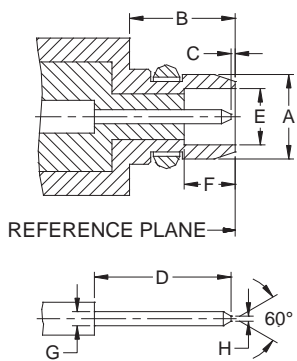
Order Code  
RFP-MCR-C1N502-58

Other MCX types available on request

# RF Connectors MMCX Series

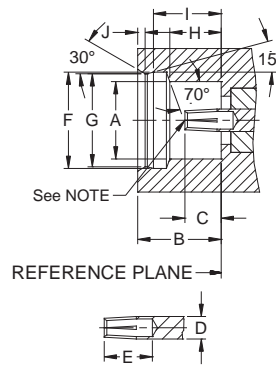


MMCX series with 50Ω impedance offer the smallest dimensions for high density applications. The MMCX connectors work a frequency range up to 6 GHz and they can be offered in thru-hole and surface mount technology for flexible and semi-rigid coaxial cable interconnection systems.



**PLUG**

Dimension	PLUG Millimeters	
	Minimum	Maximum
A	--	2.40
B	2.70	--
C	0.00	0.25
D	--	3.15
E	1.58	1.62
F	1.45	--
G	0.38	0.42
H	--	0.20



**JACK**

Dimension	JACK Millimeters	
	Minimum	Maximum
A	2.41	--
B	2.60	--
C	0.90	1.20
D	0.68	0.72
E	1.40	--
F	3.00	3.04
G	2.87	2.90
H	1.57	1.63
I	2.30	2.34
J	--	0.23

**NOTE**

In order to meet the VSWR and CR values as specified, the inner hole diameter needs to be mated with a 0.38/0.42mm dia. pin.

**Electrical**

Impedance	50 Ω
Frequency Range	0 - 6 GHz
Working Voltage	170 V rms max.
Dielectric Withstanding Voltage	500 V rms min.
VSWR	Straight Right Angle
Contact Resistance	Center Contact Outer Contact
Insulator Resistance	1000 MΩ min.

**Material**

Parts Name	Material	Finish
Body, Metal Parts	Brass per QQ-B-626	Gold 0.07μm (3 μ")
Center Contacts	Male: Brass per QQ-B-626	Gold 0.75μm (30 μ")
	Female: Beryllium copper per QQ-C-530	Gold 0.75μm (30 μ")
Insulators	Teflon	None
Crimp Ferrules	Annealed Brass	Gold 0.07μm (3 μ")

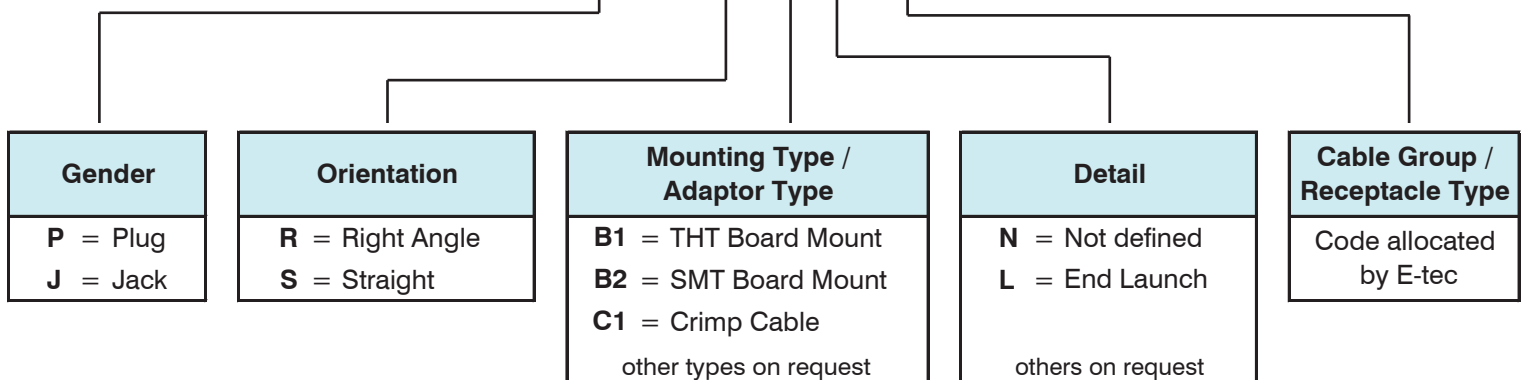
NOTE: Other materials and platings are available on request.

**Mechanical & Environmental**

Engagement Force	15 N max.
Disengagement Force	6~15 N max.
Contact Retention	11 N min.
Durability(Mating)	500 cycles min.
Temperature Range	-65°C to +155°C
Vibration	3 cycle, 3 opposite directions, 10-150 Hz, 10-60 Hz:0.75mm/.03", 60-150 Hz 10G
Temperature Shock	MIL-STD-202 Method 107
Humidity	MIL-STD-202 Method 103, Condition. B.
Mechanical Shock	MIL-STD-202 Method 213, Condition. B.

**How to order**

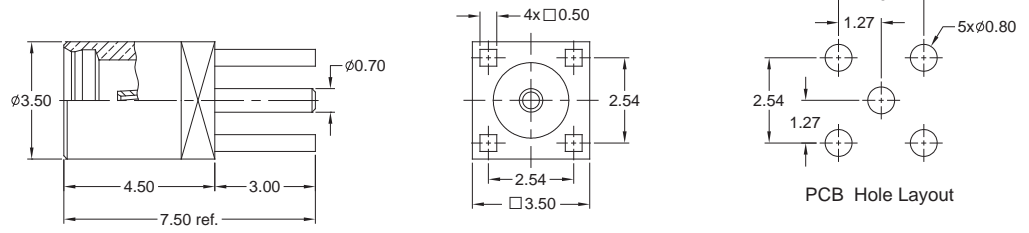
RF X - MM X - XX X 5 xx - 58



# RF Connectors MMCX Series

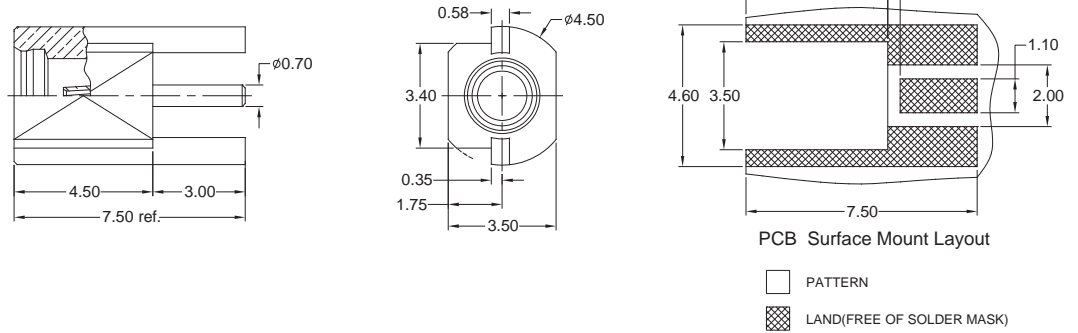


## STRAIGHT THT JACK



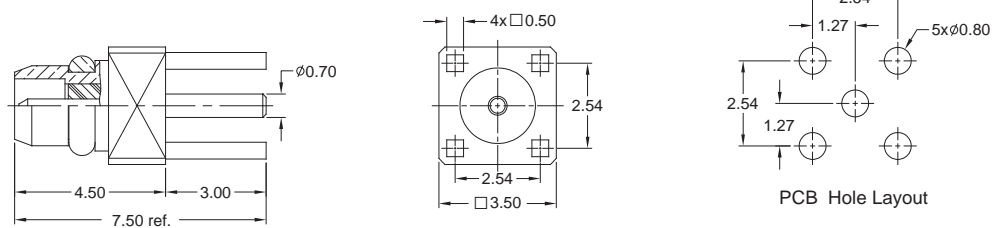
Order Code  
RFJ-MMS-B1N592-58

## R/A EMBEDDED SMT JACK



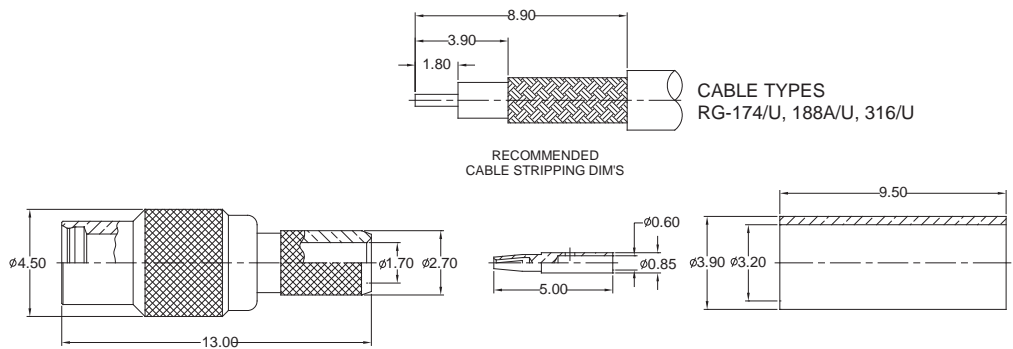
Order Code  
RFJ-MMS-B2L592-58

## STRAIGHT THT PLUG



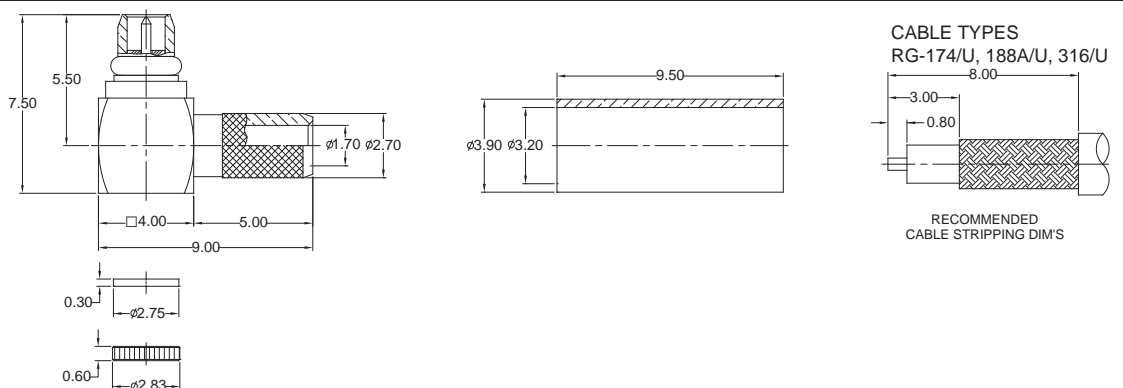
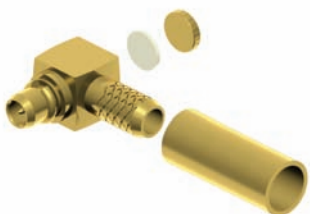
Order Code  
RFP-MMS-B1N592-58

## CRIMP JACK



Order Code  
RFJ-MMS-C1N502-58

## R/A CRIMP PLUG



Order Code  
RFP-MMR-C1N502-58

Other MMCX types available on request

# RF Connectors SMA Series



SMA connectors with 50Ω impedance are high precision subminiature devices designed for microwave applications up to 18 GHz. These connectors are produced with brass or high quality stainless steel, which offer excellent durability and mechanical strength.

PLUG		
Dimension	Millimeters	
	Minimum	Maximum
A	6.35	6.73
B	4.53	4.59
C	2.54	3.43
D	0.00	0.25
E	1.91	2.54
F	0.00	0.25
G	0.90	0.94
H	0.00	0.38
J	1.24	1.30

JACK		
Dimension	Millimeters	
	Minimum	Maximum
A	5.28	5.49
B	4.60	4.67
C	1.88	1.98
D	0.00	0.25
E	0.38	1.14
F	2.92	--
G	0.00	0.25
H	4.32	--
J	1.24	1.30
K	5.54	--

**NOTE**  
In order to meet the VSWR and CR values as specified, the inner hole diameter needs to be mated with a 0.9/0.94mm dia. pin.

Electrical		
Impedance	50 Ω	
Frequency Range	0 - 12.4 GHz on Flexible cable 0 - 18 GHz on Semi-rigid cable	
Working Voltage	RG-178: 170 V rms max. RG-316, .085": 250 V rms max. RG-142, .141": 335 V rms max.	
Dielectric Withstanding Voltage	RG-178: 500 V rms min. RG-316, .085": 750 V rms min. RG-142, .141": 1000 V rms min.	
VSWR	Straight	1.3 max.
	Right Angle	1.5 max.
Contact Resistance	Center Contact	6 mΩ max.
	Outer Contact	2 mΩ max.
Insulator Resistance	5000 MΩ min.	

Material		
Parts Name	Material	Finish
Body, Metal Parts	Brass per QQ-B-626	Gold 0.07μm (3 μ")
Center Contacts	Male: Brass per QQ-B-626 Female: Beryllium copper per QQ-C-530	Gold 0.75μm (30 μ")
Insulators	Teflon	None
Crimp Ferrules	Annealed Brass	Gold 0.07μm (3 μ")
Crimp Gaskets	Silicone rubber	None

NOTE: Other materials and platings are available on request.

Mechanical & Environmental	
Engagement Force	22 cNm max.
Disengagement Force	22 cNm max.
Coupling Nut Retention	267 N min.
Coupling Proof Torque	170 cNm min.
Contact Retention	27 N min.
Durability(Mating)	500 cycles min. (for Beryllium copper female contact only)
Temperature Range	-65°C to +155°C
Vibration	MIL-STD-202 Method 204 Test Cond. B.
Salt Spray	MIL-STD-202 Method 101 Test Cond. B.
Thermal Shock	MIL-STD-202 Method 107 Test Cond. B.

### How to order

RF X - SA X - XX X 5 xx - 58

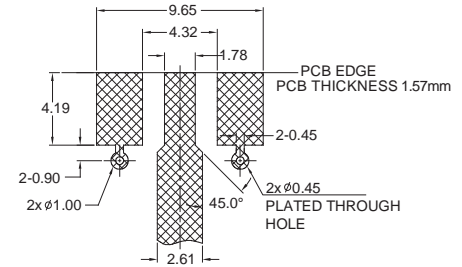
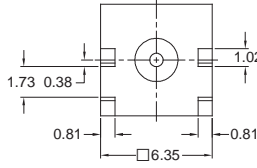
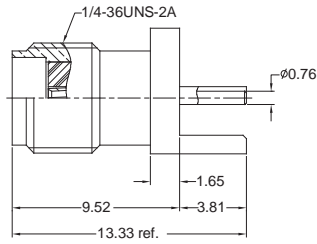
<b>Gender</b>	<b>Orientation</b>	<b>Mounting Type / Adaptor Type</b>	<b>Detail</b>	<b>Cable Group / Receptacle Type</b>
P = Plug J = Jack	R = Right Angle S = Straight	B1 = THT Board Mount B3 = END Launch Board Mount C1 = Crimp Cable P1 = Panel Board Mount other types on request	N = Not defined L = End Launch A = Bulkhead, Front Mount others on request	Code allocated by E-tec



# RF Connectors SMA Series



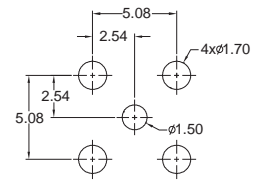
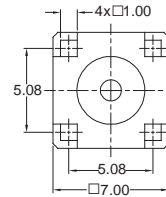
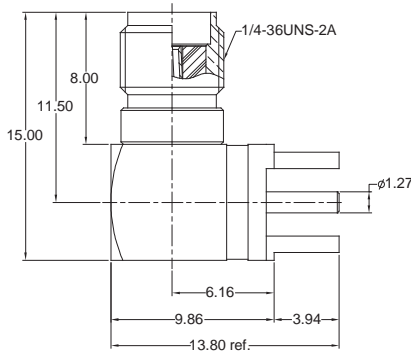
## SMT EDGE MOUNT JACK



PCB surface Mount Layout

Order Code  
RFJ-SAS-B3L592-58

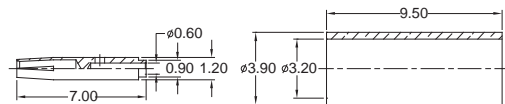
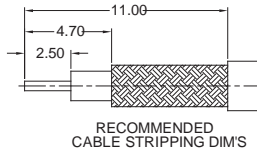
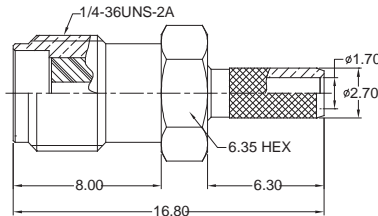
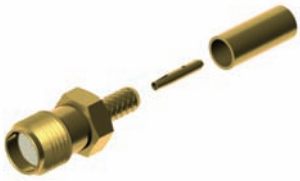
## R/A THT JACK



PCB Hole Layout

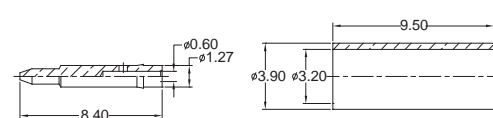
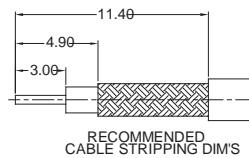
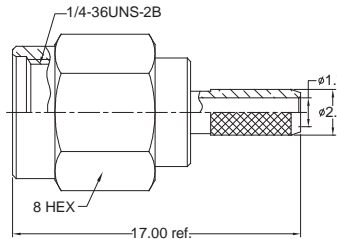
Order Code  
RFJ-SAR-B1N592-58

## CRIMP JACK



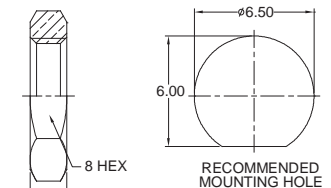
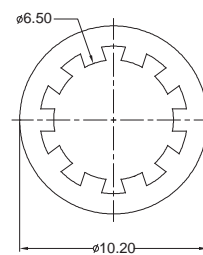
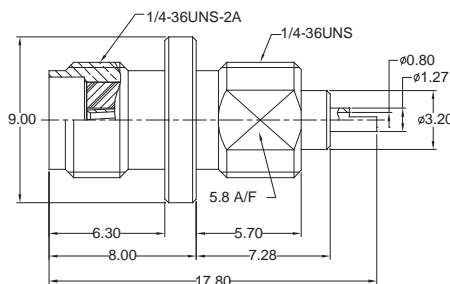
Order Code  
RFJ-SAS-C1N502-58

## CRIMP PLUG



Order Code  
RFP-SAS-C1N502-58

## PANEL JACK



Order Code  
RFJ-SAS-P1A591-58

Other SMA types available on request

# RF Connectors

## SMA Reverse Series



SMA Reverse connectors with 50Ω impedance are designed for using in spread spectrum wireless applications which a non-standard interface is needed.

**PLUG**

Dimension	Millimeters	
	Minimum	Maximum
A	2.54	3.43
B	1.24	1.30
C	4.53	4.59
D	6.35	6.73
E	0.00	0.25
F	0.00	0.25
G	2.92	--

**NOTE**  
In order to meet the VSWR and CR values as specified, the inner hole diameter needs to be mated with a 0.9/0.94mm dia. pin.

**JACK**

Dimension	Millimeters	
	Minimum	Maximum
A	5.54	--
B	4.32	--
C	0.38	1.14
D	5.28	5.49
E	4.60	4.67
F	0.90	0.94
G	0.00	0.38
H	1.24	1.30
J	0.00	0.25
K	0.00	0.25
L	1.88	1.98

Electrical	
Impedance	50 Ω
Frequency Range	0 - 12.4 GHz on Flexible cable 0 - 18 GHz on Semi-rigid cable
Working Voltage	RG-178: 170 V rms max. RG-316, .085": 250 V rms max. RG-142, .141": 335 V rms max.
Dielectric Withstanding Voltage	RG-178: 500 V rms min. RG-316, .085": 750 V rms min. RG-142, .141": 1000 V rms min.
VSWR	Straight: 1.3 max. Right Angle: 1.5 max.
Contact Resistance	Center Contact: 6 mΩ max. Outer Contact: 2 mΩ max.
Insulator Resistance	5000 MΩ min.

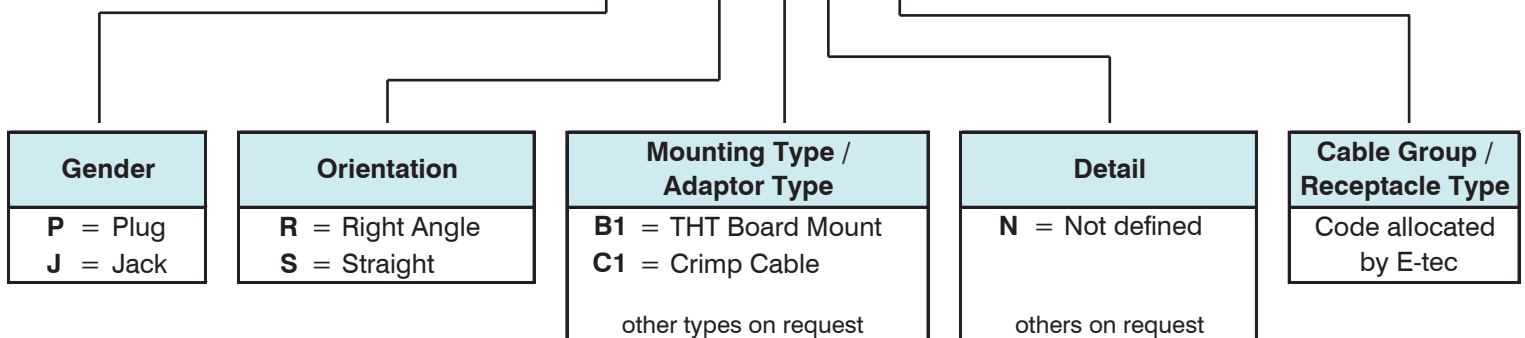
Material		
Parts Name	Material	Finish
Body, Metal Parts	Brass per QQ-B-626	Gold 0.07μm (3 μ")
Center Contacts	Male: Brass per QQ-B-626 Female: Beryllium copper per QQ-C-530	Gold 0.75μm (30 μ") Gold 0.75μm (30 μ")
Insulators	Teflon	None
Crimp Ferrules	Annealed Brass	Gold 0.07μm (3 μ")
Crimp Gaskets	Silicone rubber	None

NOTE: Other materials and platings are available on request.

Mechanical & Environmental	
Engagement Force	22 cNm max.
Disengagement Force	22 cNm max.
Coupling Nut Retention	678 cNm min.
Coupling Proof Torque	170 cNm min.
Contact Retention	68 cNm min.
Durability(Mating)	500 cycles min.
Temperature Range	-65°C to +155°C
Vibration	MIL-STD-202 Method 204 Test Cond. B.
Salt Spray	MIL-STD-202 Method 101 Test Cond. B.
Thermal Shock	MIL-STD-202 Method 107 Test Cond. B.

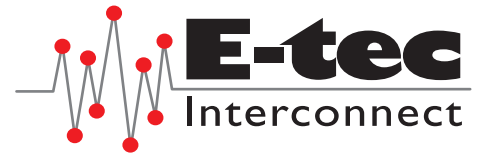
### How to order

RF X - SR X - XX X 5 xx - 58

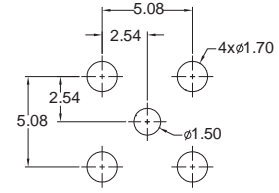
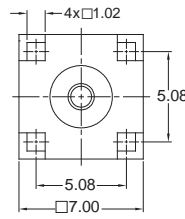
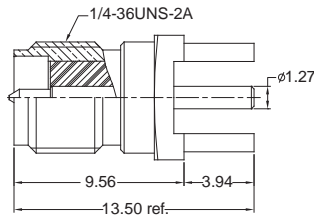


# RF Connectors

## SMA Reverse Series



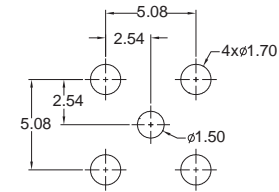
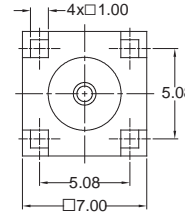
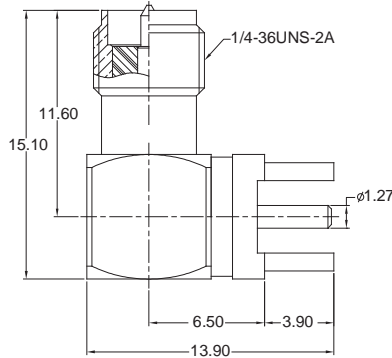
### STRAIGHT THT JACK



PCB Hole Layout

Order Code  
RFJ-SRS-B1N592-58

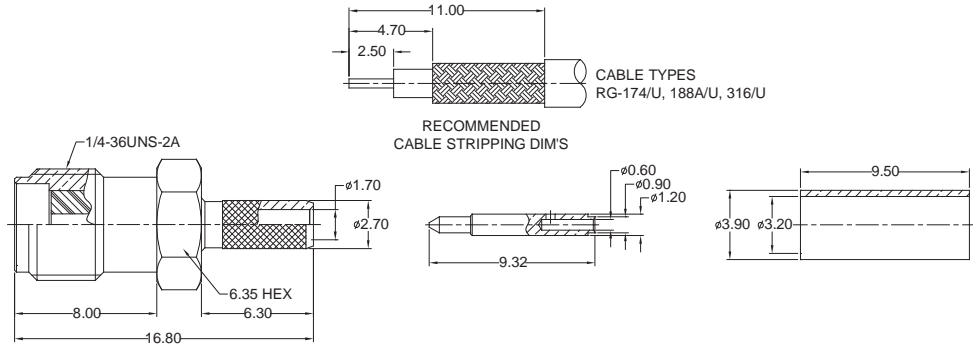
### R/A THT JACK



PCB Hole Layout

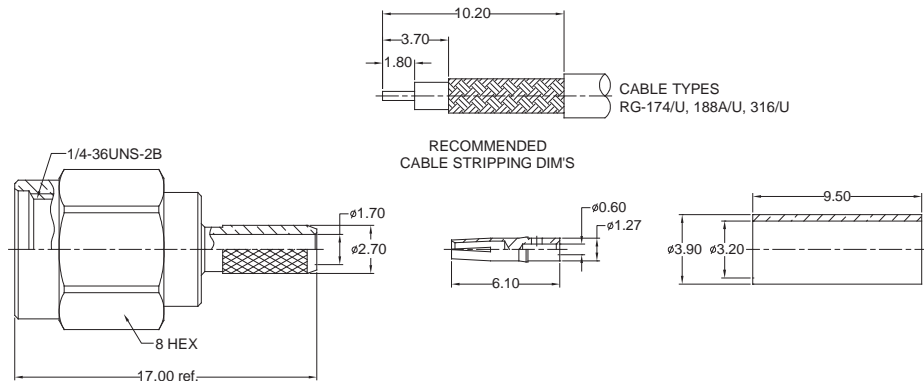
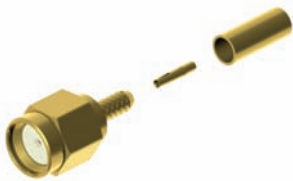
Order Code  
RFJ-SRR-B1N592-58

### CRIMP JACK



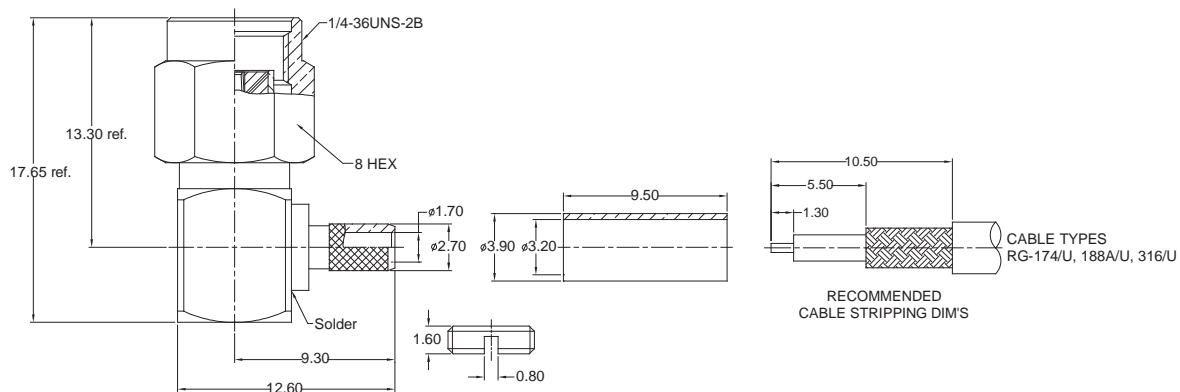
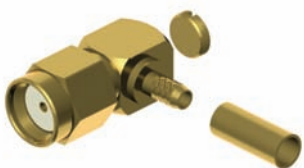
Order Code  
RFJ-SRS-C1N502-58

### CRIMP PLUG



Order Code  
RFP-SRS-C1N502-58

### R/A CRIMP PLUG



Order Code  
RFP-SRR-C1N502-58

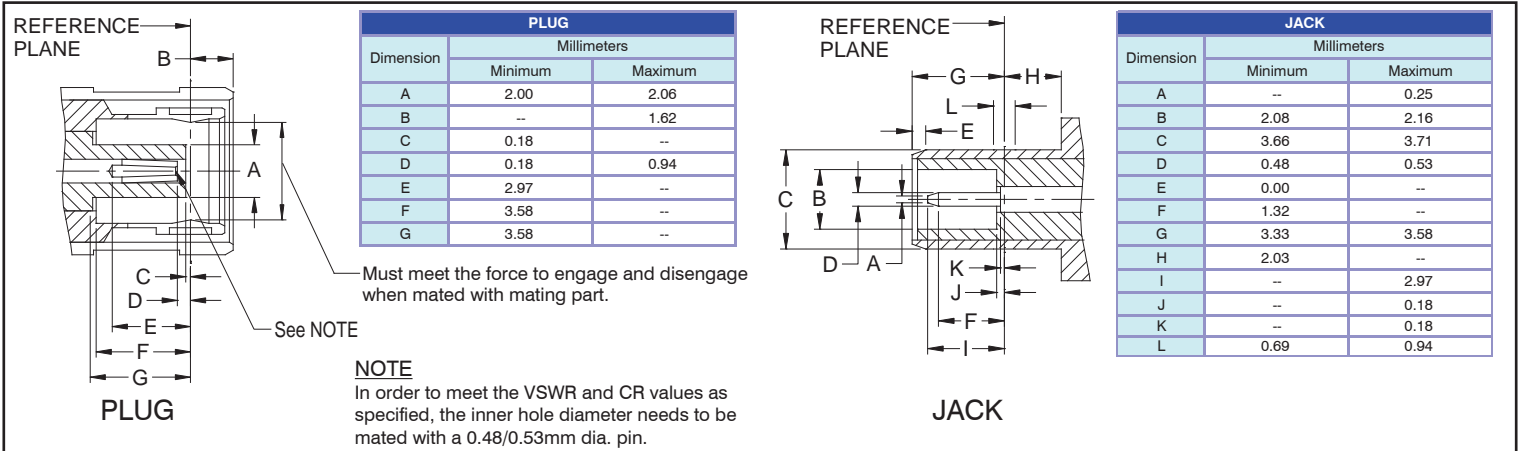
Other SMA Reverse types available on request

# RF Connectors

## SMB Series



SMB connectors with 50Ω impedance are subminiature devices designed for repeatable electrical performance up to 4 GHz. These SMB connectors offer a simple open/close snap-on coupling feature and which have become very popular in telecommunications, test equipments and instrumentation.



Electrical		
Impedance	50 Ω	
Frequency Range	0 - 4 GHz	
Working Voltage	RG-178: 250 V rms max. RG-316, .085": 335 V rms max.	
Dielectric Withstanding Voltage	RG-178: 500 V rms min. RG-316, .085": 1000 V rms min.	
VSWR	Straight	1.3 max.
	Right Angle	1.5 max.
Contact Resistance	Center Contact	6 mΩ max.
	Outer Contact	2.5 mΩ max.
Insulator Resistance	1000 MΩ min.	

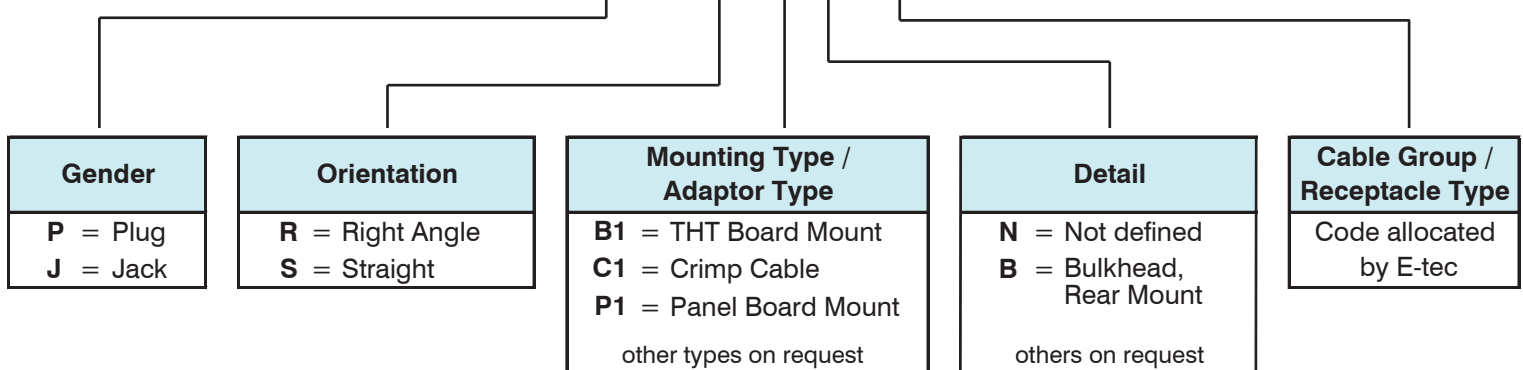
Material		
Parts Name	Material	Finish
Body, Metal Parts	Brass per QQ-B-626	Gold 0.07μm (3 μ")
Center Contacts	Male: Brass per QQ-B-626	Gold 0.75μm (30 μ")
	Female: Beryllium copper per QQ-C-530	Gold 0.75μm (30 μ")
Insulators	Teflon	None
Crimp Ferrules	Annealed Brass	Gold 0.07μm (3 μ")

NOTE: Other materials and platings are available on request.

Mechanical & Environmental	
Engagement / Disengagement Force	62 N max.
Contact Retention	18 N min.
Durability(Mating)	500 cycles min.
Temperature Range	-65°C to +155°C
Vibration	MIL-STD-202 Method 204 Test Cond. B.
Salt Spray	MIL-STD-202 Method 101 Test Cond. B.
Thermal Shock	MIL-STD-202 Method 107 Test Cond. B.

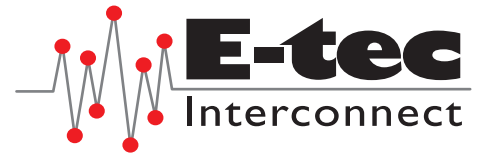
### How to order

RF X - SB X - XX X 5 xx - 58

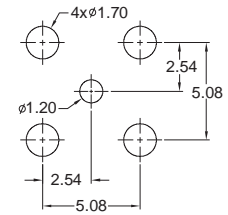
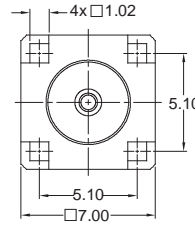
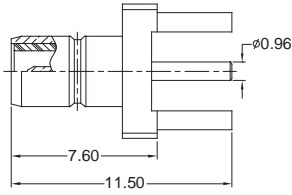


# RF Connectors

## SMB Series



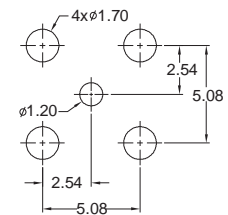
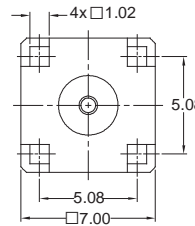
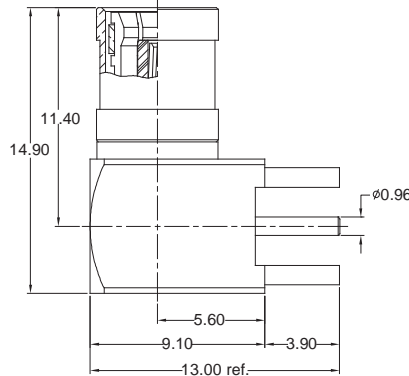
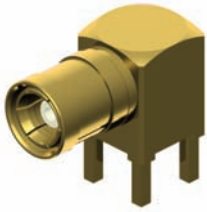
### STRAIGHT THT JACK



PCB Hole Layout

Order Code  
RFJ-SBS-B1N592-58

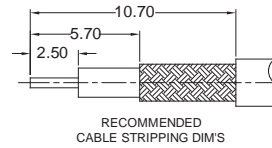
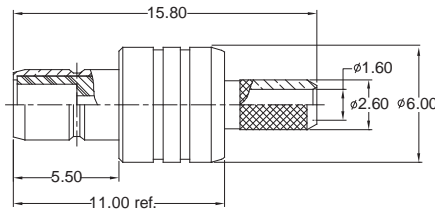
### R/A THT PLUG



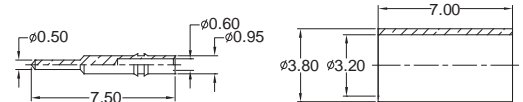
PCB Hole Layout

Order Code  
RFP-SBR-B1N592-58

### CRIMP JACK

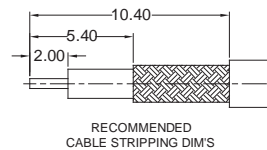
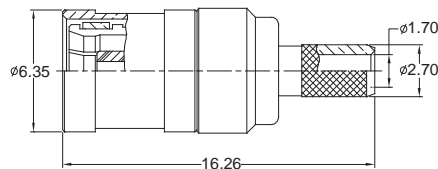


CABLE TYPES  
RG-174/U, 188A/U, 316/U, LMR-100

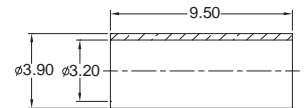
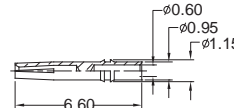


Order Code  
RFJ-SBS-C1N502-58

### CRIMP PLUG

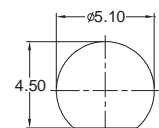
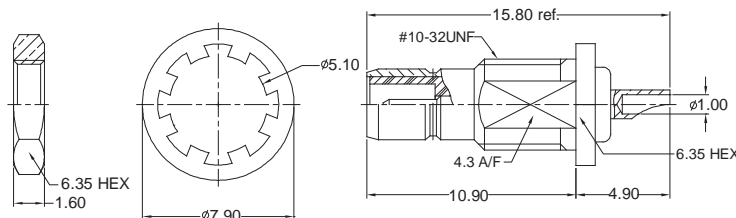


CABLE TYPES  
RG-174/U, 188A/U, 316/U, LMR-100



Order Code  
RFP-SBS-C1N502-58

### PANEL JACK



RECOMMENDED MOUNTING HOLE

Order Code  
RFJ-SBS-P1B591-58

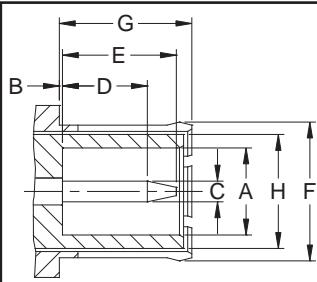
Other SMB types available on request

# RF Connectors

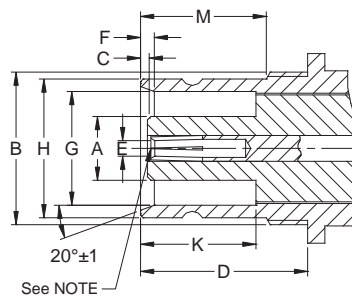
## 1.6/5.6 Series



1.6/5.6 coaxial connectors with 75Ω impedance are generally designed for radio and digital signal transmissions. These 1.6/5.6 connectors have become popular in modern telecommunication equipments.



Dimension	PLUG	
	Millimeters	
	Minimum	Maximum
A	4.00	--
B	--	0.15
C	0.97	1.03
D	3.90	4.30
E	--	5.50
F	Flared To Meet Good Electrical Contact	
G	6.40	6.60
H	5.60	



Dimension	JACK	
	Millimeters	
	Minimum	Maximum
A	--	3.80
B	M9*0.5	
C	0.25	--
D	9.70	--
F	0.90	1.10
G	6.60	6.69
H	8.10	8.25
K	6.70	--
M	7.00	7.50

### PLUG

### JACK

#### NOTE

In order to meet the VSWR and CR values as specified, the inner hole diameter needs to be mated with a 0.97/1.03mm dia. pin.

Electrical		
Impedance	75 Ω	
Frequency Range	0 - 1 GHz	
Working Voltage	335 V rms max.	
Dielectric Withstanding Voltage	1000 V rms min.	
VSWR	Straight	1.3 max.
	Right Angle	1.5 max.
Contact Resistance	Center Contact	4 mΩ max.
	Outer Contact	2 mΩ max.
Insulator Resistance	1000 MΩ min.	

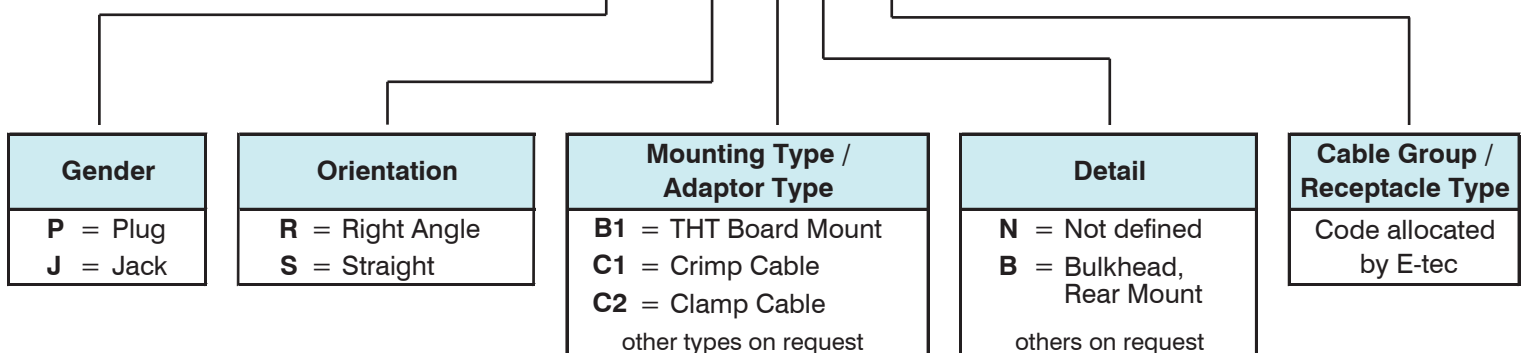
Material		
Parts Name	Material	Finish
Body, Metal Parts	Brass per QQ-B-626	Nickel 1.75μm (70 μ")
Outer Contact(Plug)	Phosphor Bronze per QQ-B-750	Gold 0.07μm (3 μ")
Center Contacts	Male: Brass per QQ-B-626	Gold 0.07μm (3 μ")
	Female: Beryllium copper per QQ-C-530	Gold 0.07μm (3 μ")
Insulators	Teflon	None
Crimp Ferrules	Annealed Brass	Nickel 1.75μm (70 μ")

NOTE: Other materials and platings are available on request.

Mechanical	
Engagement / Disengagement Force	27 N max.
Durability(Mating)	500 cycles min. (for Beryllium copper female contact only)

### How to order

RF X - 16 X - XX X 7 xx - N5

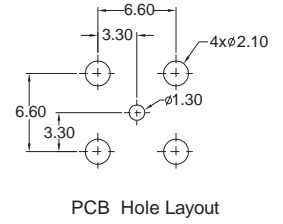
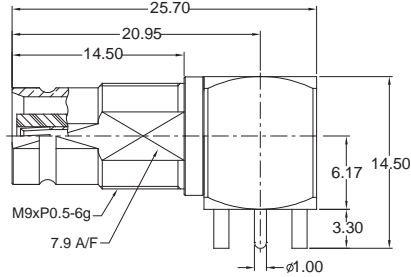
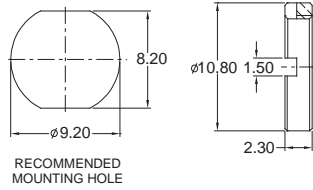


# RF Connectors

## 1.6/5.6 Series

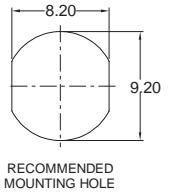
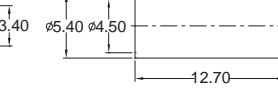
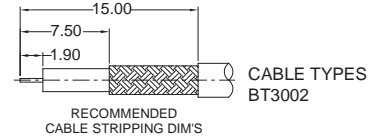
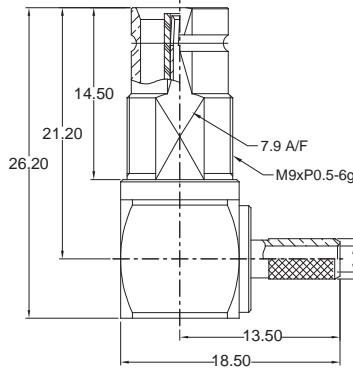
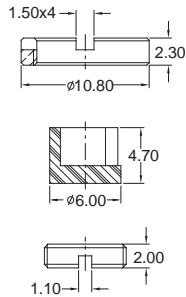


### R/A THT JACK



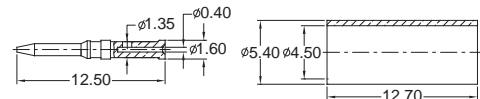
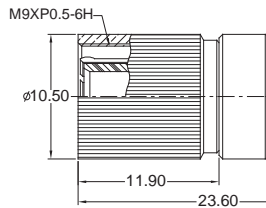
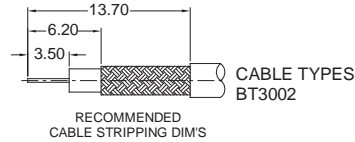
Order Code  
RFJ-16R-B1B792-N5

### R/A CRIMP JACK



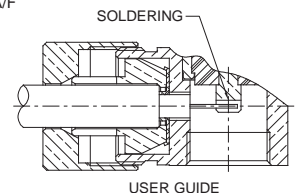
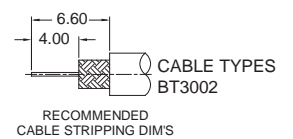
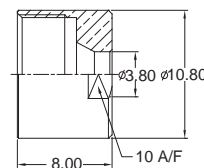
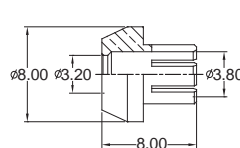
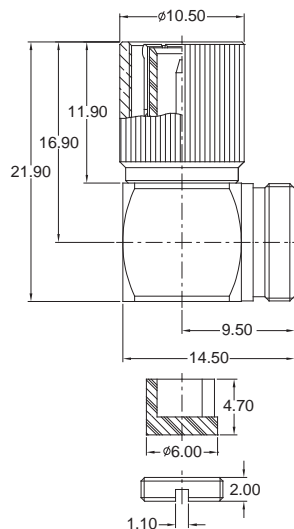
Order Code  
RFJ-16R-C1B733-N5

### CRIMP PLUG



Order Code  
RFP-16S-C1N733-N5

### R/A CLAMP PLUG



Order Code  
RFP-16R-C2N733-N5

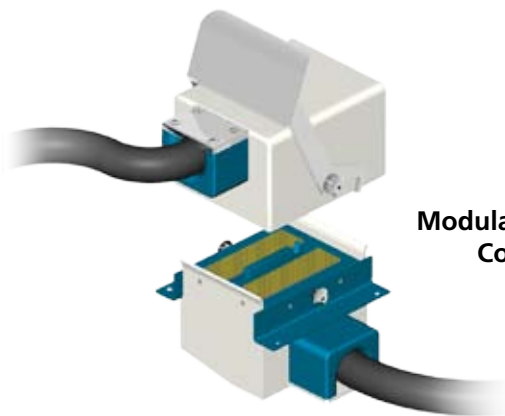
Other 1.6/5.6 types available on request

**E-tec Company Profile**

Since more than 40 years E-tec has been active in the electronics interconnection field (Test-Sockets, IC Sockets, PCB interconnect products, D-Sub's, Switches, RF Connectors, etc.) on a world-wide basis. E-tec offers a very comprehensive range of industry standard products as well as many customized products which can be found in a variety of application fields, such as aeronautics, military, medical, communications, automotive, multi-media and many others.

We offer very short delivery times from prototype small volume to large volume production series. Thanks to our own production facilities in Switzerland, Taiwan and China, we aim to offer a solution to all your problems. Quality assurance is an essential part of our production process, since our main objective is to offer products which correspond to the highest quality standards.

**OTHER AVAILABLE PRODUCTS & CUSTOM PARTS**



**Modular Equipment Connector**



**Memory Card Connectors**

**RF/Coaxial Connectors**



**LAN Solutions and Custom Cable Assembly**

**International Sales Headquarters and Factory**



Switzerland  
Schweiz  
Suisse  
E-tec Interconnect AG  
Friedhofstrasse 1  
CH-2543 Lengnau b. Biel  
Phone: +41 (0) 32 654 1550  
Fax: +41 (0) 32 652 2693  
E-mail: info@e-tec.com  
www.e-tec.com

**Factory**



Taiwan  
E-tec Interconnect Asia Ltd.  
10-2F, No. 260, Section 2,  
New Taipei Blvd., Sanchong Dist.  
24158 New Taipei City TAIWAN  
Phone: +886 / 22 999-27 26  
Fax: +886 / 22 999-52 55  
E-mail: info@e-tec-asia.com.tw  
www.e-tec-asia.com.tw

**Related Sales Headquarters**

Deutschland  
Germany  
Allemagne  
EMC electro mechanical components GmbH  
PF. 1160  
D-65510 Idstein  
Phone: +49 / 6126 / 9395-0  
Fax: +49 / 6126 / 9395-72  
E-mail: info@emc.de  
www.emc.de

England  
Angleterre  
E-tec Interconnect UK Ltd.  
Units A5 & A6 Decimus Park  
Kingstanding Way  
Tunbridge Wells  
Kent TN2 3GP  
Phone: +44 / 1892 / 53 02 60  
Fax: +44 / 1892 / 51 55 60  
E-mail: info@e-tec.co.uk  
www.e-tec.co.uk

USA/Canada  
E-tec Interconnect USA Ltd,  
Post Office Box 4078  
Mountain View CA 94040  
Phone: +1 408.746.2800  
Fax: +1 408.519.6611  
E-mail: info-us@e-tec.com  
www.e-tec.com

France  
Frankreich  
Silfox SAS  
Écopôle-ZAC Le Charme  
245, avenue de Rio  
F-77550 Moissy-Cramayel  
Phone: +33 / 1 / 49 56 04 68  
Fax: +33 / 1 / 49 56 02 87  
E-mail: info@silfox.fr  
www.silfox.fr